

Legend

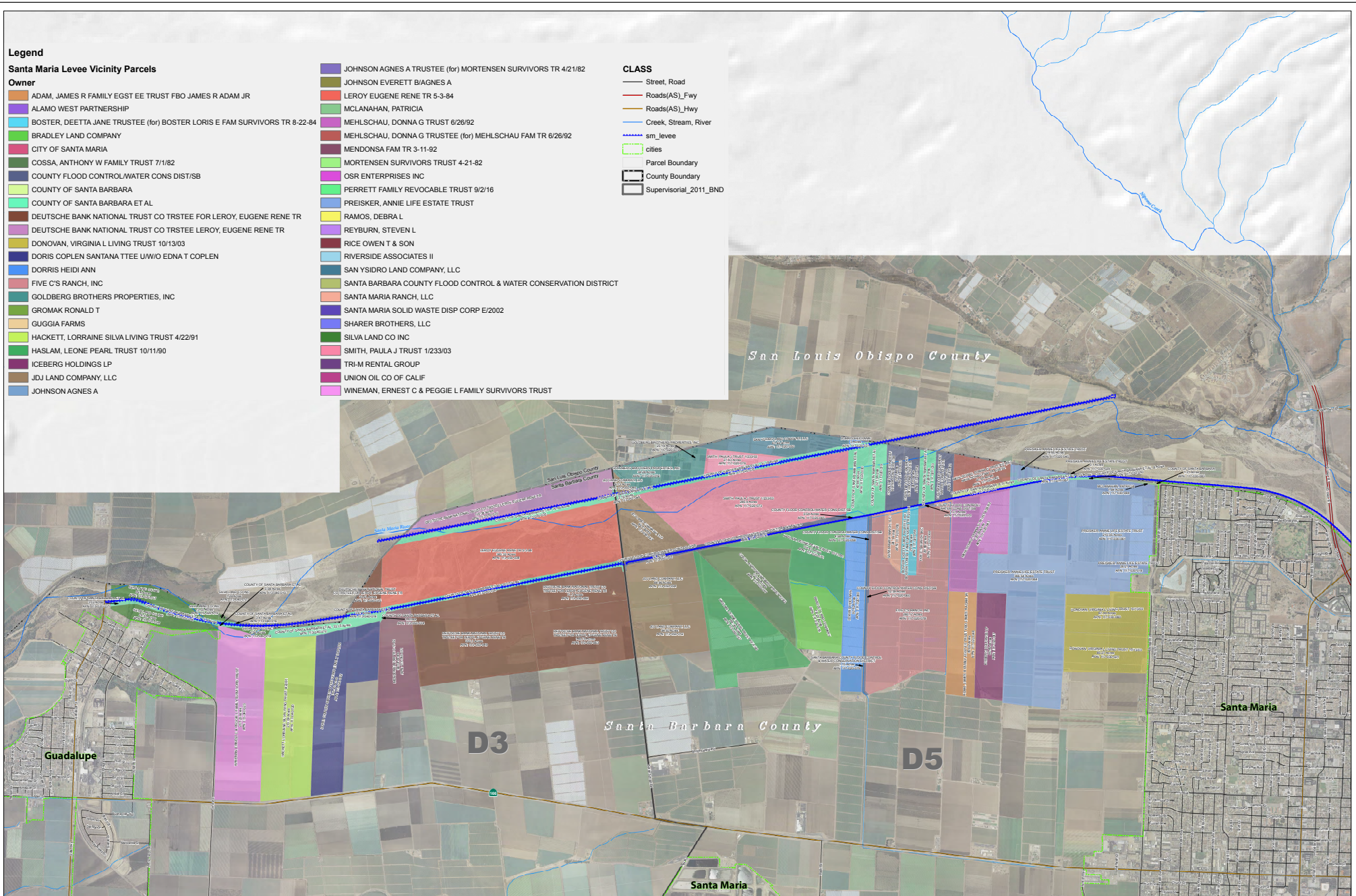
Santa Maria Levee Vicinity Parcels

Owner

- ADAM, JAMES R FAMILY EGST EE TRUST FBO JAMES R ADAM JR
- ALAMO WEST PARTNERSHIP
- BOSTER, DEETTA JANE TRUSTEE (for) BOSTER LORIS E FAM SURVIVORS TR 8-22-84
- BRADLEY LAND COMPANY
- CITY OF SANTA MARIA
- COSSA, ANTHONY W FAMILY TRUST 7/1/82
- COUNTY FLOOD CONTROL/WATER CONS DIST/SB
- COUNTY OF SANTA BARBARA
- COUNTY OF SANTA BARBARA ET AL
- DEUTSCHE BANK NATIONAL TRUST CO TRSTEE FOR LEROY, EUGENE RENE TR
- DEUTSCHE BANK NATIONAL TRUST CO TRSTEE LEROY, EUGENE RENE TR
- DONOVAN, VIRGINIA L LIVING TRUST 10/13/03
- DORIS COPLEN SANTANA TTEE U/W/O EDNA T COPLEN
- DORRIS HEIDI ANN
- FIVE C'S RANCH, INC
- GOLDBERG BROTHERS PROPERTIES, INC
- GROMAK RONALD T
- GUGGIA FARMS
- HACKETT, LORRAINE SILVA LIVING TRUST 4/22/91
- HASLAM, LEONE PEARL TRUST 10/11/90
- ICEBERG HOLDINGS LP
- JDJ LAND COMPANY, LLC
- JOHNSON AGNES A
- JOHNSON AGNES A TRUSTEE (for) MORTENSEN SURVIVORS TR 4/21/82
- JOHNSON EVERETT BIAGNES A
- LEROY EUGENE RENE TR 5-3-84
- MCLANAHAN, PATRICIA
- MEHLSCHAU, DONNA G TRUST 6/26/92
- MEHLSCHAU, DONNA G TRUSTEE (for) MEHLSCHAU FAM TR 6/26/92
- MENDONSA FAM TR 3-11-92
- MORTENSEN SURVIVORS TRUST 4-21-82
- OSR ENTERPRISES INC
- PERRETT FAMILY REVOCABLE TRUST 9/2/16
- PREISKER, ANNIE LIFE ESTATE TRUST
- RAMOS, DEBRA L
- REYBURN, STEVEN L
- RICE OWEN T & SON
- RIVERSIDE ASSOCIATES II
- SAN YSIDRO LAND COMPANY, LLC
- SANTA BARBARA COUNTY FLOOD CONTROL & WATER CONSERVATION DISTRICT
- SANTA MARIA RANCH, LLC
- SANTA MARIA SOLID WASTE DISP CORP E/2002
- SHARER BROTHERS, LLC
- SILVA LAND CO INC
- SMITH, PAULA J TRUST 1/233/03
- TRI-M RENTAL GROUP
- UNION OIL CO OF CALIF
- WINEMAN, ERNEST C & PEGGIE L FAMILY SURVIVORS TRUST

CLASS

- Street, Road
- Roads(AS)_Fwy
- Roads(AS)_Hwy
- Creek, Stream, River
- sm_levee
- cities
- Parcel Boundary
- County Boundary
- Supervisorial_2011_BND



Santa Maria Levy Map with Parcel information

Compiled by the County Surveyor's Office in November 2017

Register Map Source: GIS 2015
Parcel Data Source: Santa Barbara County Assessor Parcels 2017-05-21
Disclaimer: This map is a graphic representation and is for reference only. Distances shown on this map have been modified to fit the parcelized base map created and provided by the County Assessor's Office.
No level of accuracy is claimed for the district line shown hereon and lines should not be used to obtain coordinate values, distances, or bearings.
Although every effort has been made to ensure the accuracy of information, errors and conditions originating from physical sources used to develop the database may be reflected in this data.
Santa Barbara County shall not be liable for any errors, omissions, or damages that result from inappropriate use of this document.

